

**Anti-TFF1 Antibody**  
**Catalog # ABO11000****Specification**

---

**Anti-TFF1 Antibody - Product Information**

Application	WB, IHC-P
Primary Accession	<a href="#">P04155</a>
Host	Rabbit
Reactivity	Human
Clonality	Polyclonal
Format	Lyophilized

**Description**

Rabbit IgG polyclonal antibody for Trefoil factor 1(TFF1) detection. Tested with WB, IHC-P in Human.

**Reconstitution**

Add 0.2ml of distilled water will yield a concentration of 500ug/ml.

**Anti-TFF1 Antibody - Additional Information**

**Gene ID** 7031

**Other Names**

Trefoil factor 1, Breast cancer estrogen-inducible protein, PNR-2, Polypeptide P1.A, hP1.A, Protein pS2, TFF1, BCEI, PS2

**Calculated MW**

9150 MW KDa

**Application Details**

Immunohistochemistry(Paraffin-embedded Section), 0.5-1 µg/ml, Human, By Heat<br>Western blot, 0.1-0.5 µg/ml, Human<br>

**Subcellular Localization**

Secreted .

**Tissue Specificity**

Found in stomach, with highest levels in the upper gastric mucosal cells (at protein level). Detected in goblet cells of the small and large intestine and rectum, small submucosal glands in the esophagus, mucous acini of the sublingual gland, submucosal glands of the trachea, and epithelial cells lining the exocrine pancreatic ducts but not in the remainder of the pancreas (at protein level). Scattered expression is detected in the epithelial cells of the gallbladder and submucosal glands of the vagina, and weak expression is observed in the bronchial goblet cells of the pseudostratified epithelia in the respiratory system (at protein level). Detected in urine (at protein level). Strongly expressed in breast cancer but at low levels in normal mammary tissue. It is regulated by estrogen in MCF-7 cells. Strong expression found in normal gastric mucosa and in the regenerative tissues surrounding ulcerous lesions of gastrointestinal tract, but lower expression found in gastric cancer (at protein level). .

**Protein Name**

Trefoil factor 1

**Contents**Each vial contains 5mg BSA, 0.9mg NaCl, 0.2mg Na<sub>2</sub>HPO<sub>4</sub>, 0.05mg Thimerosal, 0.05mg NaN<sub>3</sub>.**Immunogen**

A synthetic peptide corresponding to a sequence in the middle region of human Estrogen Inducible Protein pS2(67-84aa WCFYPNTIDVPPEEECEF).

**Purification**

Immunogen affinity purified.

**Cross Reactivity**

No cross reactivity with other proteins

**Storage****At -20°C for one year. After reconstitution, at 4°C for one month. It can also be aliquotted and stored frozen at -20°C for a longer time. Avoid repeated freezing and thawing.****Sequence Similarities**

Contains 1 P-type (trefoil) domain.

**Anti-TFF1 Antibody - Protein Information****Name** TFF1**Synonyms** BCEI, PS2**Function**

Stabilizer of the mucous gel overlying the gastrointestinal mucosa that provides a physical barrier against various noxious agents. May inhibit the growth of calcium oxalate crystals in urine.

**Cellular Location**

Secreted

**Tissue Location**

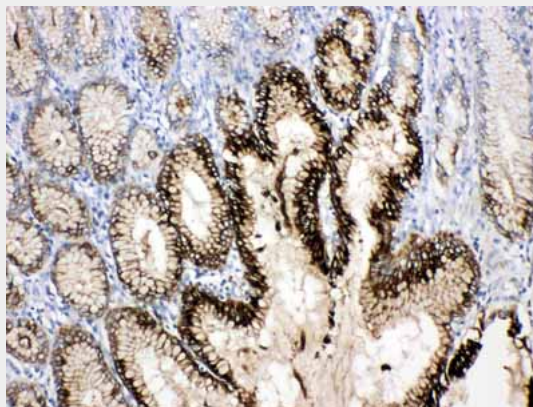
Found in stomach, with highest levels in the upper gastric mucosal cells (at protein level). Detected in goblet cells of the small and large intestine and rectum, small submucosal glands in the esophagus, mucous acini of the sublingual gland, submucosal glands of the trachea, and epithelial cells lining the exocrine pancreatic ducts but not in the remainder of the pancreas (at protein level). Scattered expression is detected in the epithelial cells of the gallbladder and submucosal glands of the vagina, and weak expression is observed in the bronchial goblet cells of the pseudostratified epithelia in the respiratory system (at protein level). Detected in urine (at protein level). Strongly expressed in breast cancer but at low levels in normal mammary tissue. It is regulated by estrogen in MCF-7 cells. Strong expression found in normal gastric mucosa and in the regenerative tissues surrounding ulcerous lesions of gastrointestinal tract, but lower expression found in gastric cancer (at protein level).

**Anti-TFF1 Antibody - Protocols**

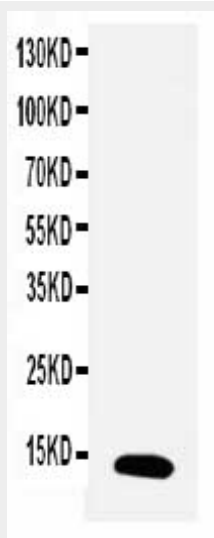
Provided below are standard protocols that you may find useful for product applications.

- [Western Blot](#)
- [Blocking Peptides](#)
- [Dot Blot](#)
- [Immunohistochemistry](#)
- [Immunofluorescence](#)
- [Immunoprecipitation](#)
- [Flow Cytometry](#)
- [Cell Culture](#)

#### Anti-TFF1 Antibody - Images



Anti-Estrogen Inducible Protein Ps2 antibody, ABO11000, IHC(P)IHC(P): Human Gastric Cancer Tissue



Anti-Estrogen Inducible Protein Ps2 antibody, ABO11000, Western blottingWB: MCF-7 Cell Lysate

#### Anti-TFF1 Antibody - Background

TFF1 (Trefoil factor 1), also known as pS2, is a protein that in humans is encoded by the TFF1 gene. Members of the trefoil family are characterized by having at least one copy of the trefoil motif, a 40-amino acid domain that contains three conserved disulfides. They are stable secretory proteins expressed in gastrointestinal mucosa. Their functions are not defined, but they may protect the mucosa from insults, stabilize the mucus layer, and affect healing of the epithelium. It is found that TFF1 in normal human urine inhibited the growth of calcium oxalate crystals. Urinary TFF1 showed an inhibitory potency similar to that of nephrocalcin, and inhibition was dose dependent and inhibited by TFF1 antisera, particularly by antisera directed to the TFF1 C terminus. Concentrations

and relative amounts of TFF1 in the urine of patients with idiopathic calcium oxalate kidney stones were significantly less than those found in controls. This gene, which is expressed in the gastric mucosa, has also been studied because of its expression in human tumors. This gene and two other related trefoil family member genes are found in a cluster on chromosome 21.